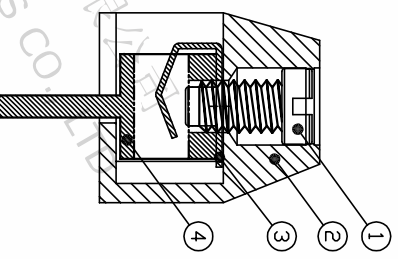
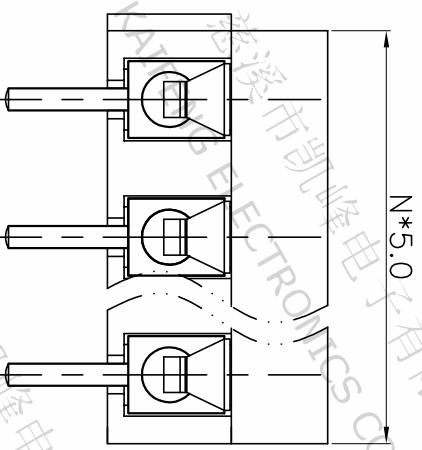
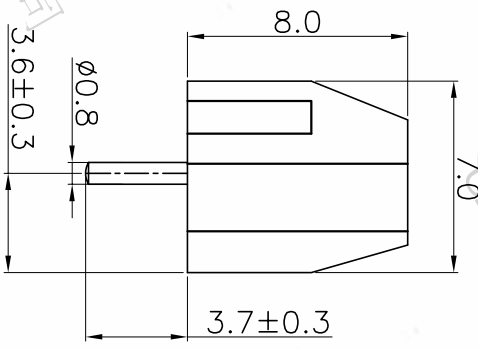
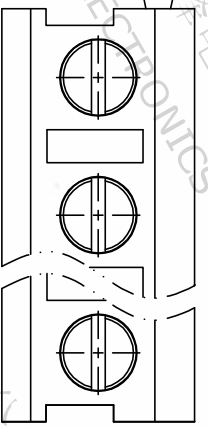


REV.	DESCRIPTION	DATE	DRAFTER	APPROVER
A1	DWG.REL	2020.05.16	DENG	JIN



- Material
 ØScrews : M2.0 steel, Zinc plated,
 - slot type
 ØHousing : PA66, UL94V-0
 ØReed : Copper alloy, Ni plated
 or stainless steel
 ØPin header : Copper alloy, Tin plated

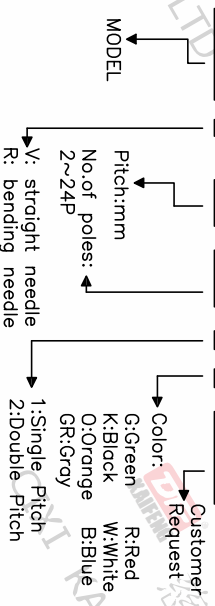
- Electrical
 UL IEC
 Rated voltage : 300V 250V
 Rated current : 10A 12A
 Insulation resistance: 500MΩ/DC500V
 Withstanding Voltage : AC1500V/1min
 Wire range: 22-16AWG 1.5mm²

- Mechanical
 Operating temperature: -40°C ~ +105°C
 Soldering temperature: 250°C ±5/5sec
 Torque: 0.2N.m (1.77Lb.in)
 Strip length: 4.5-5mm

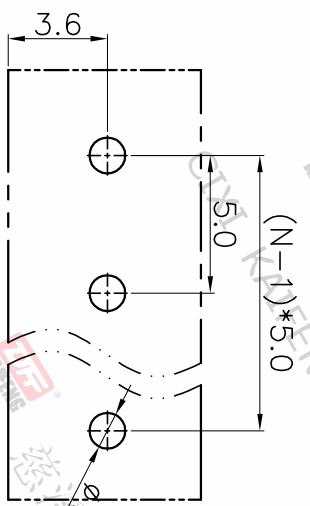
• RoHS compliance

HOW TO ORDER

KF125 V -5.0-XXP-1 X-XXXXX



P.C.B.LAYOUT



Pitch range	Nominal dimension range	0.1/10	0.1/10
>0	>0	~	~
>6	>30	~	~
>10	>60	~	~
~	~	~	~
10	60	~	~
24	100	~	~
~	~	~	~
30	150	~	~
~	~	~	~
±0.15	±0.30	±0.50	±1.00
±0.20	±0.30	±0.50	±1.00
±0.30	±0.50	±0.70	±1.30
±2*	±2*	±2*	±2*

PROJECTION	UNIT	TITLE
mm	mm	KF125V-5.0-XXP-1X
A4	A4	SHEET SIZE
KF125	KF125	SERIES

DRAWING TYPE	CUSTOMER DRAWING
SCALE	1:1
SHEET	1 OF 1
DRAWING NO.	W15000012

DF 慈溪市凯峰电子有限公司
 CIXI KAIFENG ELECTRONICS CO.,LTD